



CATALOG OF

REPLACEMENT PARTS

MODEL RS22A & AW SERIES PREWASH UNIT

CRS66A
ML-104052 R-L
ML-104055 L-R

CRS66AW
ML-104086 R-L
ML-104087 L-R

CRS76A
ML-104202 R-L
ML-104201 L-R

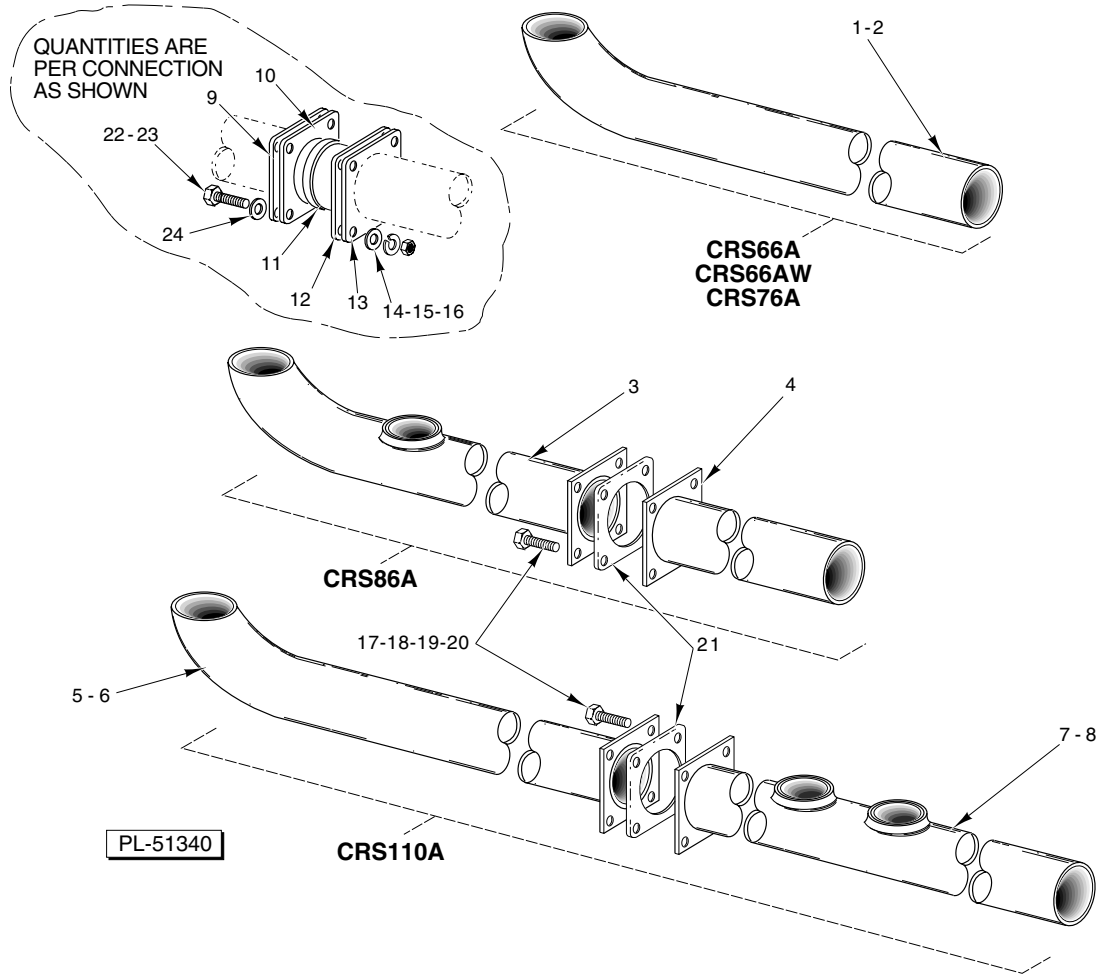
CRS86A
ML-103910 R-L
ML-103911 L-R

CRS110A
ML-110044 R-L
ML-110043 L-R

PRIOR MLS COVERED IN THIS MANUAL:

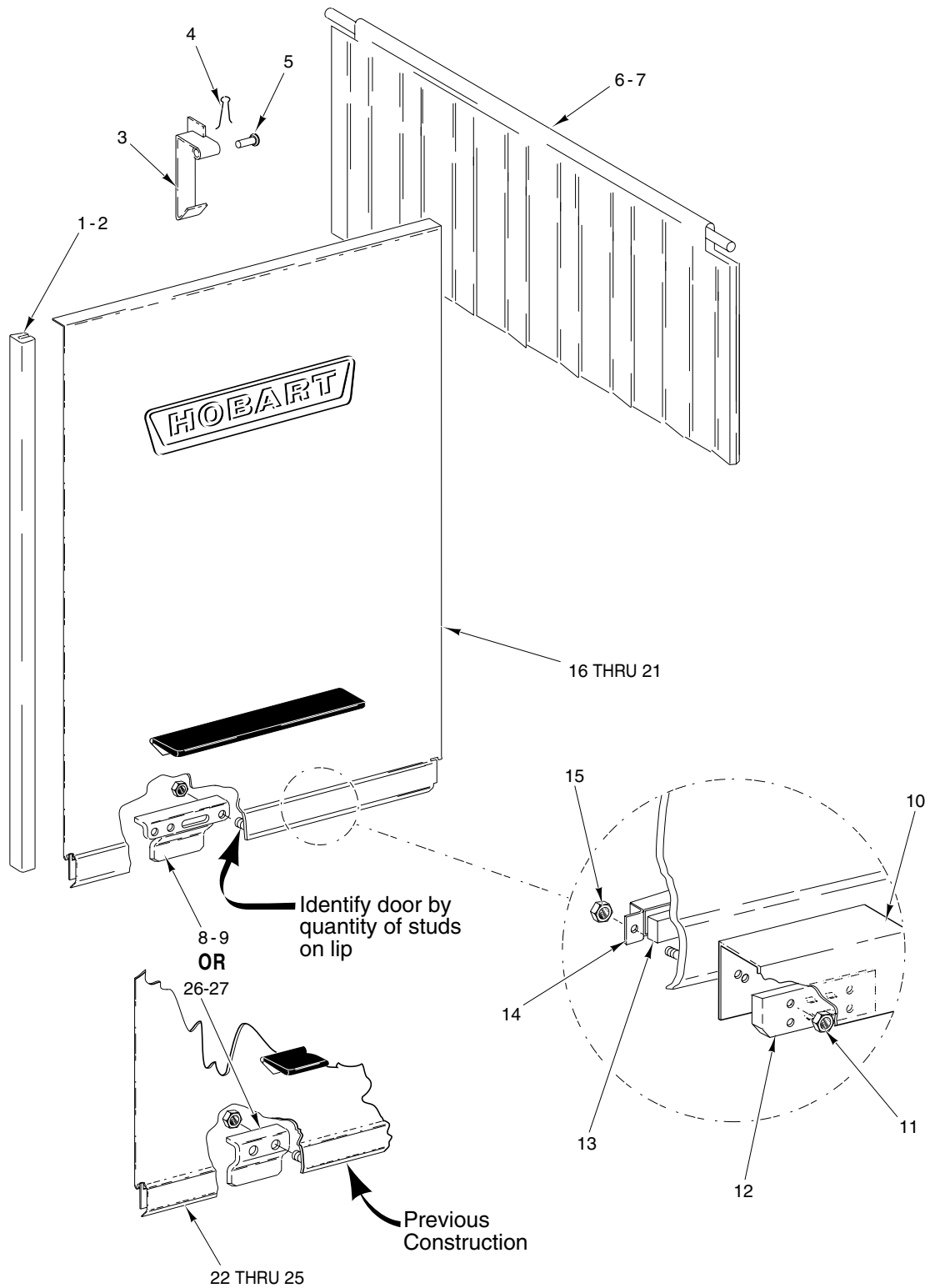
CRS66A
ML-38947 R-L
ML-38948 L-R

CRS66AW
ML-103958 R-L
ML-103959 L-R



FLOW BACK TUBE

ILLUS.	PART NO.	NAME OF PART	AMT.
	PL-51340		
1	00-274113-00001	Flow Back Tube (R-L) (CRS66A/AW & CRS76A)	1
2	00-274113-00002	Flow Back Tube (L-R) (CRS66A/AW & CRS76A)	1
3	00-436708	Flow Back Tube-Inside (CRS86A)	1
4	00-436710-00001	Flow Back Tube-Outside (CRS86A)	1
5	00-329664	Flow Back Tube-Outside (R-L) (CRS110A)	1
6	00-289502	Flow Back Tube-Outside (L-R) (CRS110A)	1
7	00-329658-00002	Flow Back Tube-Inside (R-L) (CRS110A)	1
8	00-329659-00002	Flow Back Tube-Inside (L-R) (CRS110A)	1
9	00-120115	Retainer – Seal	1
10	00-120603	Gasket – Seal Retainer	1
11	00-077621-00002	Ring – Sealing	1
12	00-120603	Gasket – Seal Retainer	1
13	00-120115	Retainer – Seal	1
14	WS-017-08	Washer	4
15	WL-006-23	Lockwasher ⁵ / ₁₆ Medium (SST)	4
16	NS-015-11	Nut ⁵ / ₁₆ -18 Hex	4
17	SC-041-15	Cap Screw ⁵ / ₁₆ -18 x 1 ¹ / ₄ Hex Hd.	4
18	WS-017-08	Washer	8
19	WL-006-23	Lockwasher ⁵ / ₁₆ Medium (SST)	4
20	NS-015-11	Nut ⁵ / ₁₆ -18 Hex	4
21	00-120603	Gasket – Seal Retainer	2
22	SC-041-15	Cap Screw ⁵ / ₁₆ -18 x 1 ¹ / ₄ Hex Hd.	4
23	00-545595	Sealer (¹ / ₈ Rd.)	AR
24	WS-017-08	Washer	4



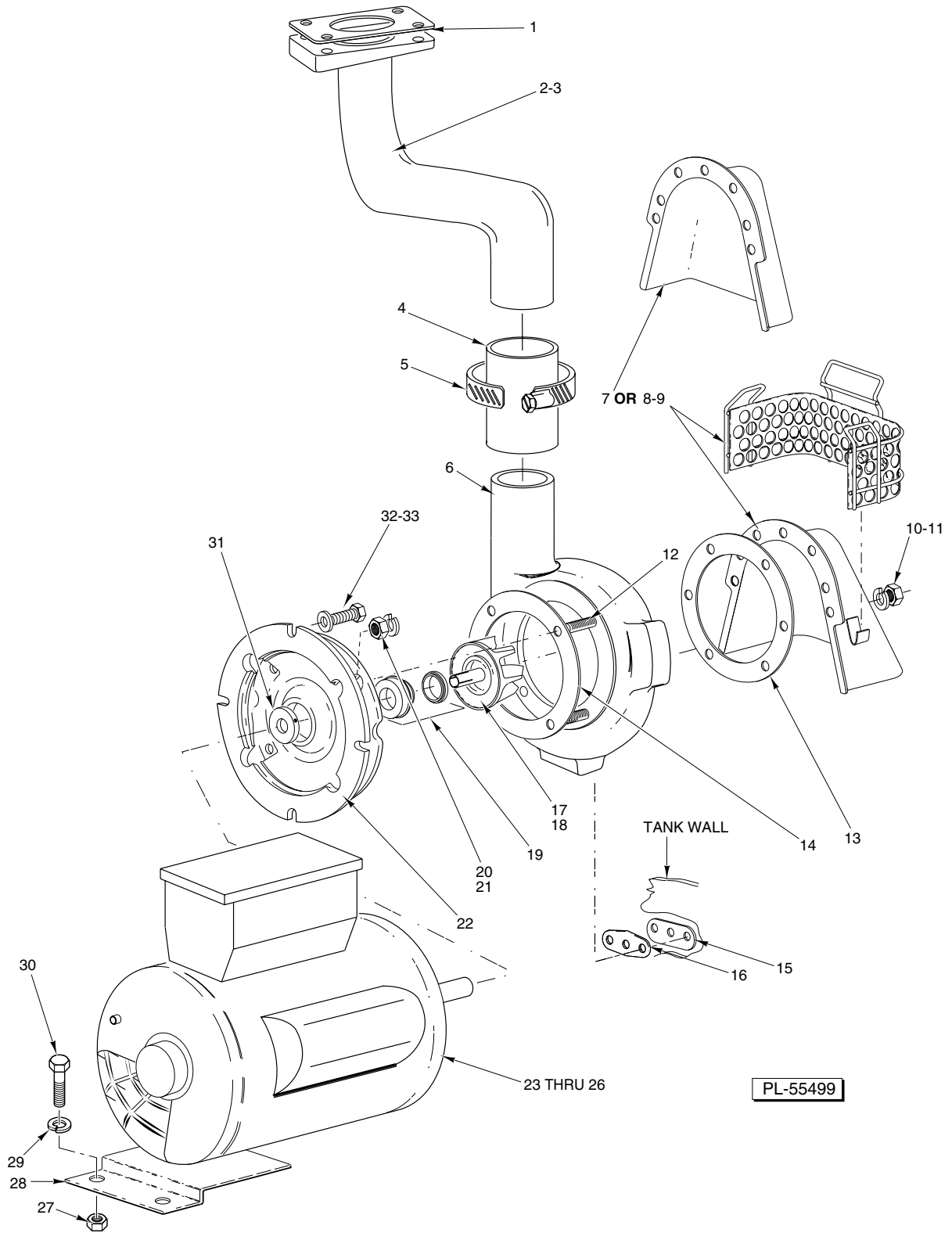
PL-55281

DOOR AND CURTAIN

DOOR AND CURTAIN

ILLUS.	PART NO.	NAME OF PART	AMT.
PL-55281			
1	00-112378-00049	Door Slide (26 ¹ / ₈ Door Height)	2
2	00-112378-00050	Door Slide (32 ¹ / ₈ Door Height)	2
3	00-185864	Catch – Door	1
4	PC-005-02	Cotter Pin 1 ¹ / ₁₆ x 1 ¹ / ₂ (SST)	1
5	00-012114	Pin	1
6	00-120151-00001	Splash Curtain (10-C1)	1
7	00-120266-00001	Curtain Rod	AR
8	00-328065	Actuator – Lift Drain	1
9	NS-031-21	Stop Nut – Special 1 ¹ / ₄ -20 Hex	AR
10	00-270996	Insulator – Switch	1
11	NS-031-50	Stop Nut 6-32 Hex (SST)	2
12	00-749347	Switch – Reed Encapsulated	1
13	00-290160	Magnet	1
14	00-290159	Retainer – Magnet	1
15	NS-031-50	Stop Nut 6-32 Hex (SST)	2
16	00-328080-00003	Door (26 ¹ / ₈) (R-L) (4 Studs)	1
17	00-328080-00004	Door (26 ¹ / ₈) (L-R) (4 Studs)	1
18	00-328081-00003	Door (32 ¹ / ₈) (R-L) (4 Studs)	1
19	00-328081-00004	Door (32 ¹ / ₈) (L-R) (4 Studs)	1
20	00-329296-00003	Door (26 ¹ / ₈) (R-L & L-R) (8 Studs)	1
21	00-329297-00003	Door (32 ¹ / ₈) (R-L & L-R) (8 Studs)	1
*22	—	Door (26 ¹ / ₈) (R-L)	1
*23	—	Door (26 ¹ / ₈) (L-R)	1
*24	—	Door (32 ¹ / ₈) (R-L)	1
*25	—	Door (32 ¹ / ₈) (L-R)	1
26	00-274767	Actuator – Lift Drain	1
27	NS-031-21	Stop Nut – Special 1 ¹ / ₄ -20 Hex	2
	00-120152-00001	Splash Curtain Assy. (Incls. Items 6 & 7)	1

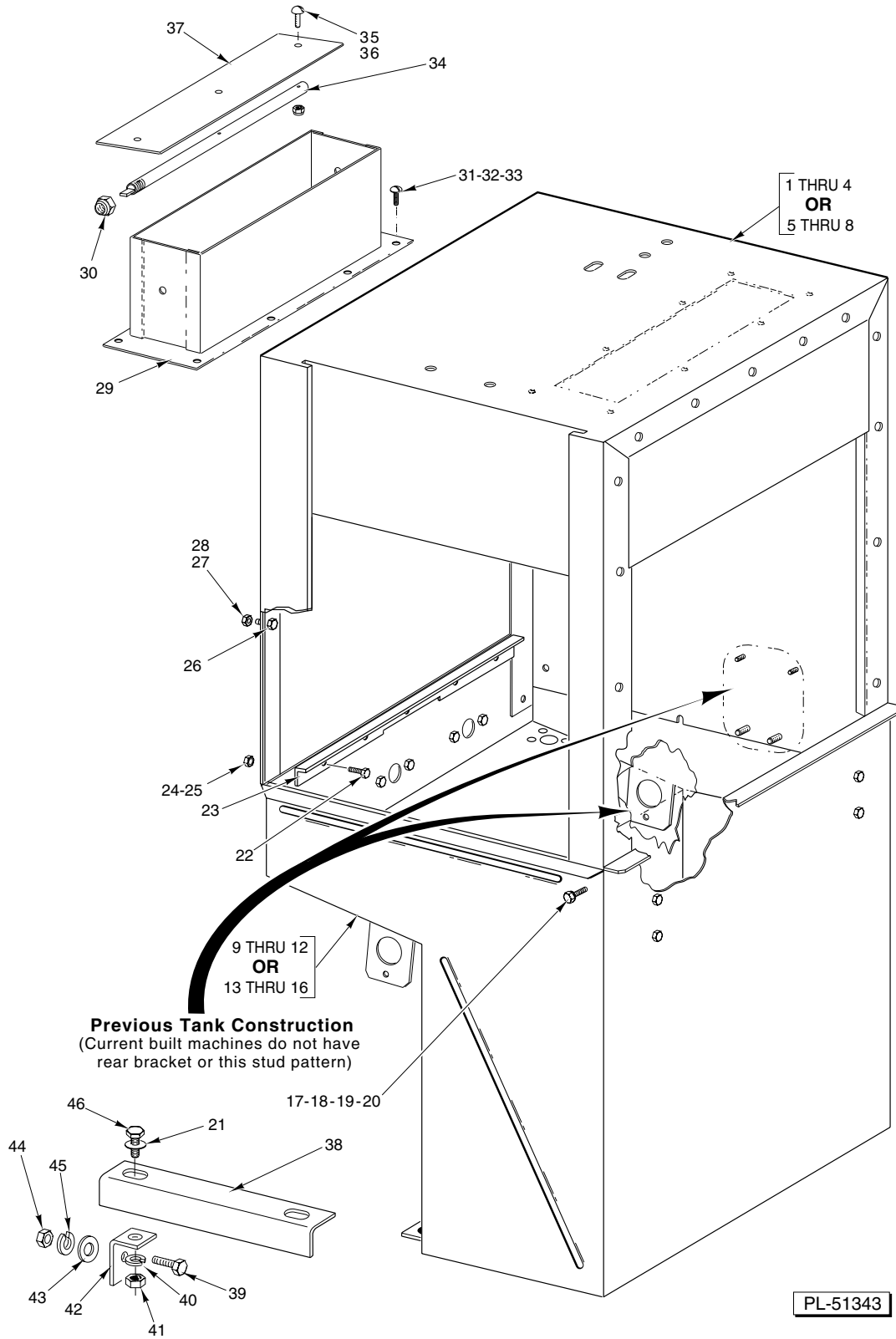
*No longer available. Order either item 16, 17, 18, or 19 & item 8 to convert to present style.



PREWASH MOTOR AND PUMP

PREWASH MOTOR AND PUMP

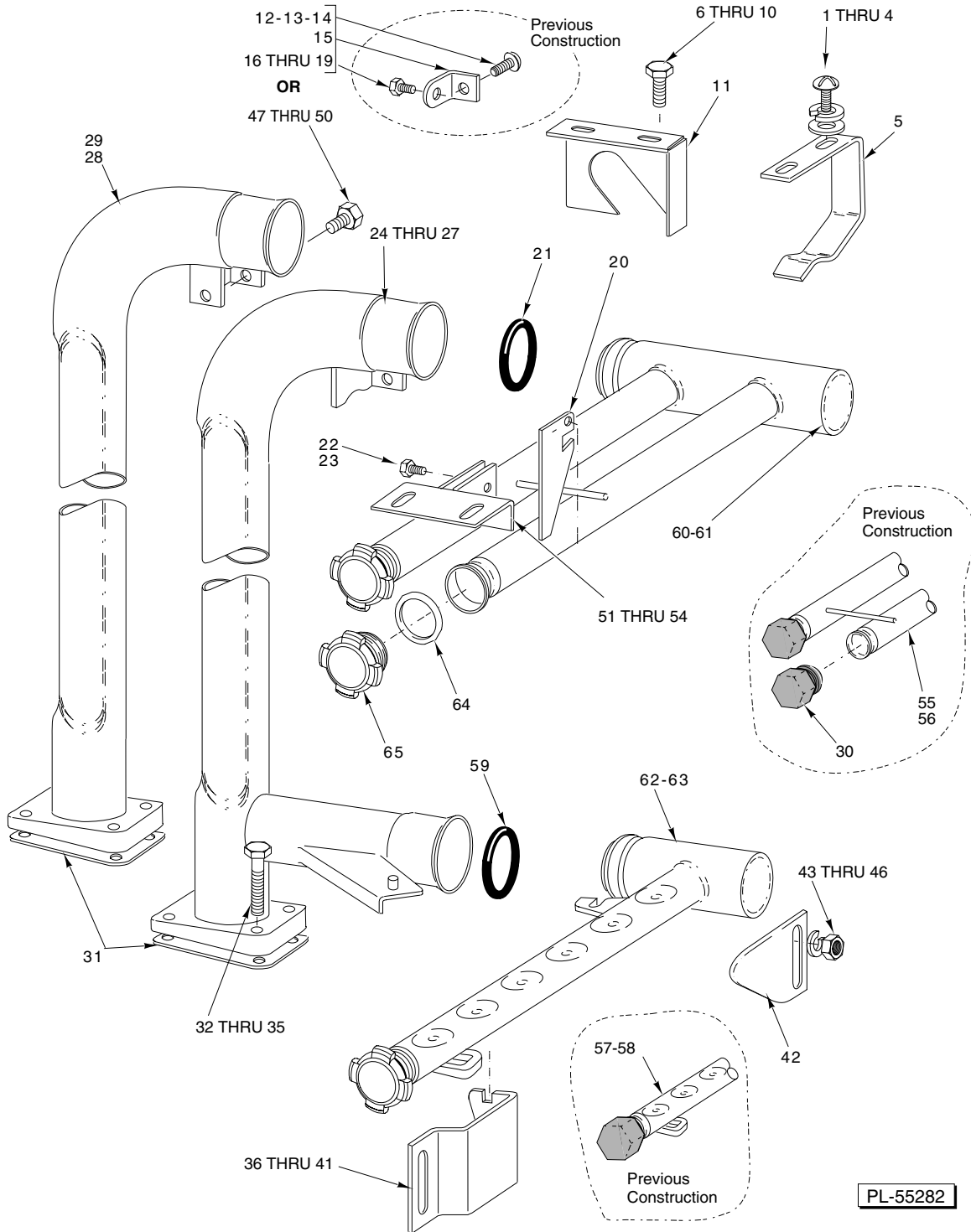
ILLUS.	PART NO.	NAME OF PART	AMT.
PL-55499			
1	00-270968	Gasket – Wash Pipe	1
2	00-274133	Tube – Discharge (R-L)	1
3	00-274148	Tube – Discharge (L-R) (Not Shown)	1
4	00-749586	Hose – Discharge	1
5	00-542337	Clamp – Hose	2
6	00-274227-00001	Pump Shell (Incls. Item 7)	1
7	00-274223	Shroud	1
8	00-274246	Shroud	1
9	00-328362	Strainer – Pump	1
10	WL-006-23	Lockwasher ⁵ / ₁₆ Medium (SST)	10
11	NS-015-11	Nut ⁵ / ₁₆ -18 Hex	10
12	00-274227-00005	Stud	AR
13	00-119050	Gasket	1
14	00-274227-00004	Gasket	1
15	00-812776	Support Plate	2
16	00-119051	Gasket – Pump Drain Hole	2
17	00-274227-00008	Impeller & Sleeve (60 Hz.)	1
18	00-274227-00011	Impeller & Sleeve (50 Hz.)	1
19	00-274227-00006	Seal – Shaft	1
20	WL-006-22	Lockwasher ⁵ / ₁₆ Light	4
21	NS-015-11	Nut ⁵ / ₁₆ -18 Hex	4
22	00-274227-00003	Adapter	1
23	00-274230-00005	Motor (1 Ph., 60 Hz.) (1 Hp.)	1
24	00-274230-00006	Motor (3 Ph., 60 Hz.) (1 Hp.)	1
25	00-274230-00007	Motor (1 Ph., 50 Hz.) (1 Hp.)	1
26	00-274230-00008	Motor (3 Ph., 50 Hz.) (1 Hp.)	1
27	NS-015-01	Nut ¹ / ₄ -20 Hex (SST)	2
28	00-812069	Bracket – Motor Support	1
29	WL-006-17	Lockwasher ¹ / ₄ Medium	2
30	SC-041-05	Cap Screw ¹ / ₄ -20 x ⁵ / ₈ Hex Hd. (SST)	2
31	00-274227-00002	Clamp	1
32	SC-041-29	Cap Screw ³ / ₈ -16 x ⁷ / ₈ Hex Hd. (SST)	4
33	WS-006-44	Washer	4



PREWASH CHAMBER AND TANK

PREWASH CHAMBER AND TANK

ILLUS. PL-51343	PART NO.	NAME OF PART	AMT.
1	00-435775	Chamber Assy. (26 ¹ / ₈ Door Height) (R-L)	1
2	00-435777	Chamber Assy. (26 ¹ / ₈ Door Height) (L-R)	1
3	00-435776	Chamber Assy. (32 ¹ / ₈ Door Height) (R-L)	1
4	00-435778	Chamber Assy. (32 ¹ / ₈ Door Height) (L-R)	1
5	00-274106-00001	Chamber Assy. (26 ¹ / ₈ Door Height) (R-L)	1
6	00-274129-00001	Chamber Assy. (26 ¹ / ₈ Door Height) (L-R)	1
7	00-274577-00001	Chamber Assy. (32 ¹ / ₈ Door Height) (R-L)	1
8	00-274702-00001	Chamber Assy. (32 ¹ / ₈ Door Height) (L-R)	1
9	00-274099	Tank Assy. W/Rear Bracket (R-L)	1
10	00-271876	Tank Assy. (L-R) (Not Shown)	1
11	00-274099-00002	Tank Assy. (R-L) (With Side Loader)	1
12	00-271876-00002	Tank Assy. (L-R) (With Side Loader)	1
13	00-329928-00001	Tank Assy. (R-L)	1
14	00-329926-00001	Tank Assy. (L-R)	1
15	00-329928-00002	Tank Assy. (R-L) (With Side Loader)	1
16	00-329926-00002	Tank Assy. (L-R) (With Side Loader)	1
17	SC-041-11	Cap Screw ⁵ / ₁₆ -18 x ³ / ₄ Hex Hd. (SST)	4
18	WL-006-23	Lockwasher ⁵ / ₁₆ Medium (SST)	6
19	NS-015-11	Nut ⁵ / ₁₆ -18 Hex	6
20	WS-017-01	Washer	6
21	WS-017-01	Washer	4
22	SC-041-05	Cap Screw ¹ / ₄ -20 x ⁵ / ₈ Hex Hd. (SST)	5
23	00-274103	Support – Tank	1
24	WL-006-17	Lockwasher ¹ / ₄ Medium	5
25	NS-015-01	Nut ¹ / ₄ -20 Hex (SST)	5
26	SC-041-05	Cap Screw ¹ / ₄ -20 x ⁵ / ₈ Hex Hd. (SST)	15
27	WL-006-17	Lockwasher ¹ / ₄ Medium	15
28	NS-015-01	Nut ¹ / ₄ -20 Hex (SST)	15
29	00-075621	Vent Stack Assy.	1
30	NS-036-12	Stop Nut ³ / ₈ -24 Elastic	1
31	SC-053-02	Mach. Screw 10-24 x ¹ / ₂ Truss Hd. (SST)	8
32	NS-031-15	Stop Nut 10-24 Hex (SST)	8
33	00-508453	Sealer	0
34	00-064919	Shaft – Damper	1
35	SC-021-11	Mach. Screw 6-32 x ³ / ₄ Rd. Hd.	3
36	NS-031-50	Stop Nut 6-32 Hex (SST)	3
37	00-075623	Damper – Vent Stack	1
38	00-274092-00001	Strut – Tank-to-Tank	2
39	SC-041-11	Cap Screw ⁵ / ₁₆ -18 x ³ / ₄ Hex Hd. (SST)	2
40	WL-006-23	Lockwasher ⁵ / ₁₆ Medium (SST)	4
41	NS-015-11	Nut ⁵ / ₁₆ -18 Hex	4
42	00-274091	Bracket – Strut Support	2
43	WS-017-08	Washer	2
44	NS-015-11	Nut ⁵ / ₁₆ -18 Hex	2
45	WL-006-23	Lockwasher ⁵ / ₁₆ Medium (SST)	2
46	SC-041-11	Cap Screw ⁵ / ₁₆ -18 x ³ / ₄ Hex Hd. (SST)	4



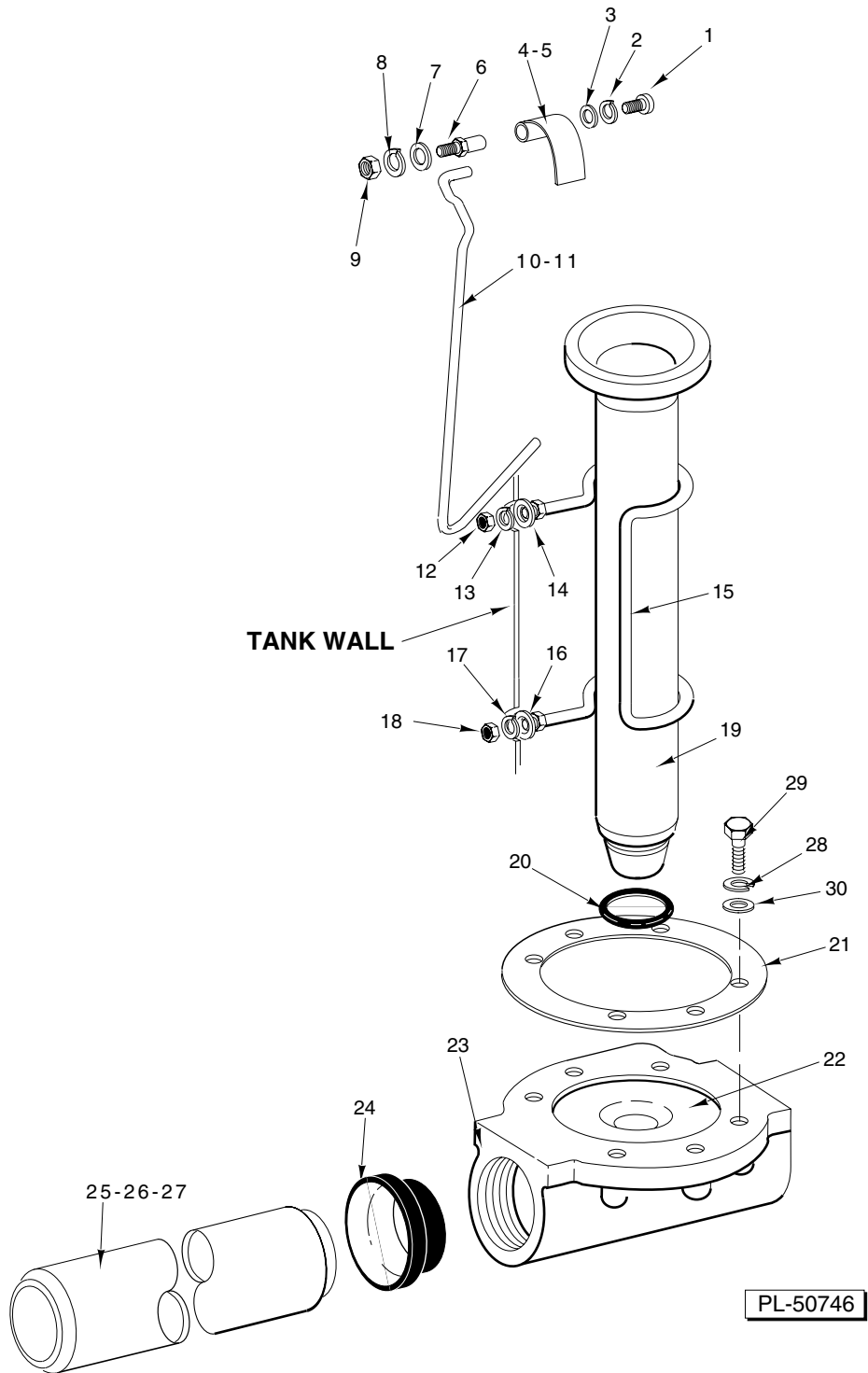
PREWASH ARMS AND TUBES

ILLUS.	PART NO.	NAME OF PART	AMT.
1	SC-125-85	Mach. Screw 1/4-20 x 5/8 Truss Hd. (SST)	2
2	WS-022-01	Washer	4
3	WL-006-17	Lockwasher 1/4 Medium	2

PREWASH ARMS AND TUBES

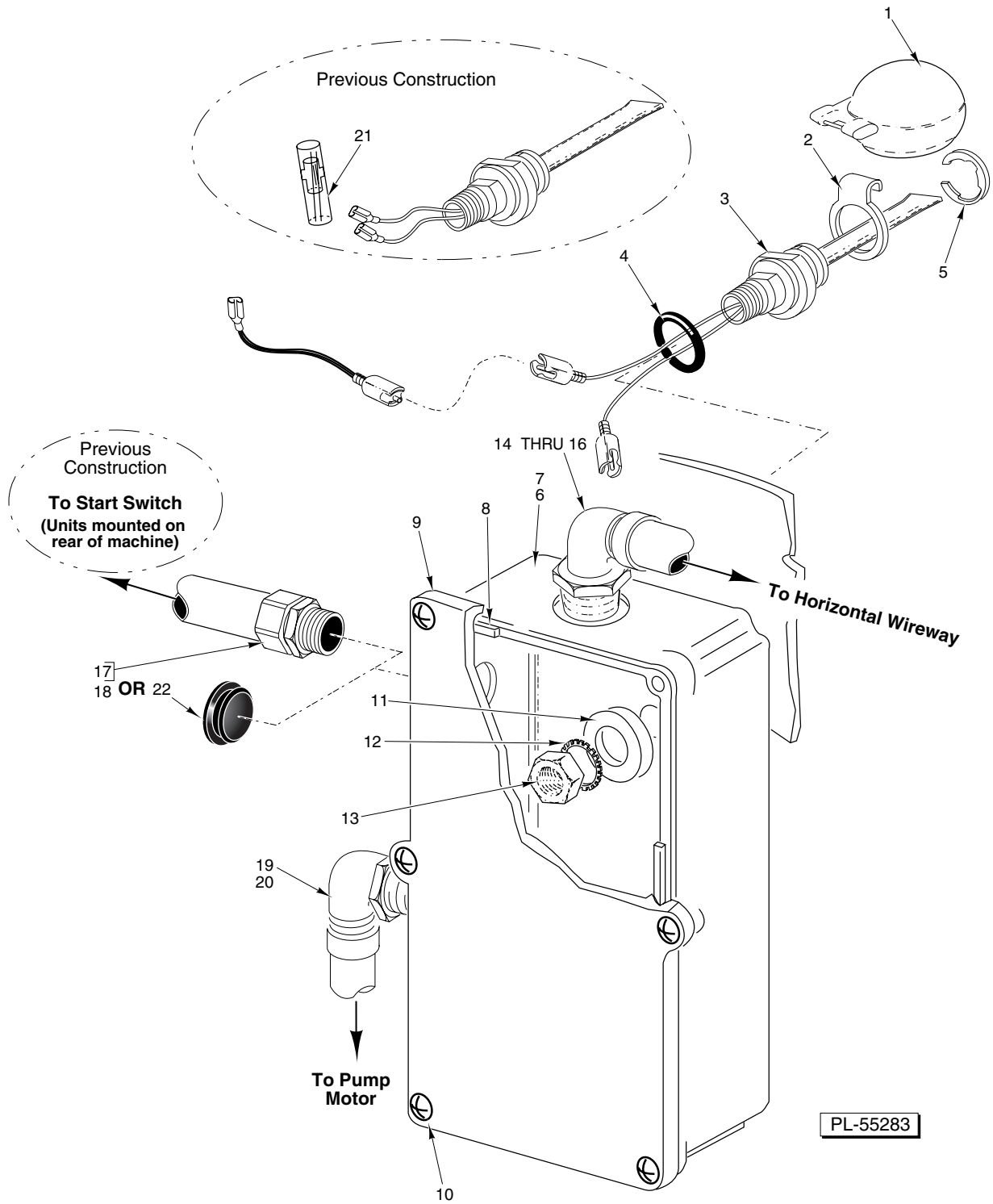
ILLUS. PL-55282	PART NO.	NAME OF PART	AMT.
4	NS-015-01	Nut 1/4-20 Hex (SST)	2
5	00-271026	Hanger – Upper Wash Arm	1
6	SC-041-11	Cap Screw 5/16-18 x 3/4 Hex Hd. (SST)	2
7	WS-017-01	Washer	2
8	WS-017-08	Washer	2
9	WL-006-23	Lockwasher 5/16 Medium (SST)	2
10	NS-015-11	Nut 5/16-18 Hex	2
11	00-271029	Guide – Upper Wash Arm	1
12	SC-053-42	Mach. Screw 1/4-20 x 5/8 Truss Hd. (SST)	1
13	WL-006-17	Lockwasher 1/4 Medium	1
14	NS-015-01	Nut 1/4-20 Hex (SST)	1
15	00-185732	Bracket	1
16	SC-041-05	Cap Screw 1/4-20 x 5/8 Hex Hd. (SST)	1
17	WS-022-01	Washer	1
18	WL-006-17	Lockwasher 1/4 Medium	1
19	NS-015-01	Nut 1/4-20 Hex (SST)	1
20	00-289760	Latch	1
21	00-067500-00019	O-Ring	1
22	SC-041-01	Cap Screw 1/4-20 x 3/4 Hex Hd. (SST)	2
23	NS-031-19	Stop Nut 1/4-20 Elastic (SST)	2
24	00-274135	Wash Pipe (R-L) (26 1/8 Ht.)	1
25	00-274138	Wash Pipe (L-R) (26 1/8 Ht.)	1
26	00-274725	Wash Pipe (R-L) (32 1/8 Ht.)	1
27	00-274728	Wash Pipe (L-R) (32 1/8 Ht.)	1
28	00-274145	Wash Pipe (26 1/8 Ht.)	1
29	00-274726	Wash Pipe (32 1/8 Ht.)	1
30	00-475087	Plug – Wash Arm	3
31	00-270968	Gasket – Wash Pipe	1
32	SC-041-68	Cap Screw 5/16-18 x 1 7/8 Hex Hd. (SST)	4
33	WS-017-08	Washer	8
34	WL-006-23	Lockwasher 5/16 Medium (SST)	4
35	NS-015-11	Nut 5/16-18 Hex	4
36	00-274108-00002	Catch – Adjustable (R-L)	1
37	00-274108-00001	Catch – Adjustable (L-R)	1
38	NS-015-11	Nut 5/16-18 Hex	2
39	WL-006-23	Lockwasher 5/16 Medium (SST)	2
40	WS-017-08	Washer	2
41	SC-041-11	Cap Screw 5/16-18 x 3/4 Hex Hd. (SST)	2
42	00-274222	Support – Adjustable	1
43	NS-015-11	Nut 5/16-18 Hex	2
44	WL-006-23	Lockwasher 5/16 Medium (SST)	2
45	WS-017-08	Washer	2
46	SC-041-11	Cap Screw 5/16-18 x 3/4 Hex Hd. (SST)	2
47	SC-041-01	Cap Screw 1/4-20 x 3/4 Hex Hd. (SST)	1
48	WS-022-01	Washer	2
49	WL-006-17	Lockwasher 1/4 Medium	1
50	NS-015-01	Nut 1/4-20 Hex (SST)	1
51	00-812821	Bracket	1
52	WS-017-08	Washer	2
53	WL-006-23	Lockwasher 5/16 Medium (SST)	2
54	NS-015-11	Nut 5/16-18 Hex	2
*55	00-274136	Wash Arm – Upper (R-L)	1
*56	00-274130	Wash Arm – Upper (L-R)	1
*57	00-274131	Wash Arm – Lower (R-L)	1
*58	00-274155	Wash Arm – Lower (L-R)	1
59	00-067500-00110	O-Ring	1
60	00-749426	Wash Arm – Upper (R-L)	1
61	00-749425	Wash Arm – Upper (L-R)	1
62	00-749424	Wash Arm – Lower (R-L)	1
63	00-749423	Wash Arm – Lower (L-R)	1
64	00-067500-00127	O-Ring	3
65	00-475589	Plug – Wash Arm	3

*Obsolete part number. For replacement use, item 60, 61, 62, or 63 with items 64 and 65.



DRAIN

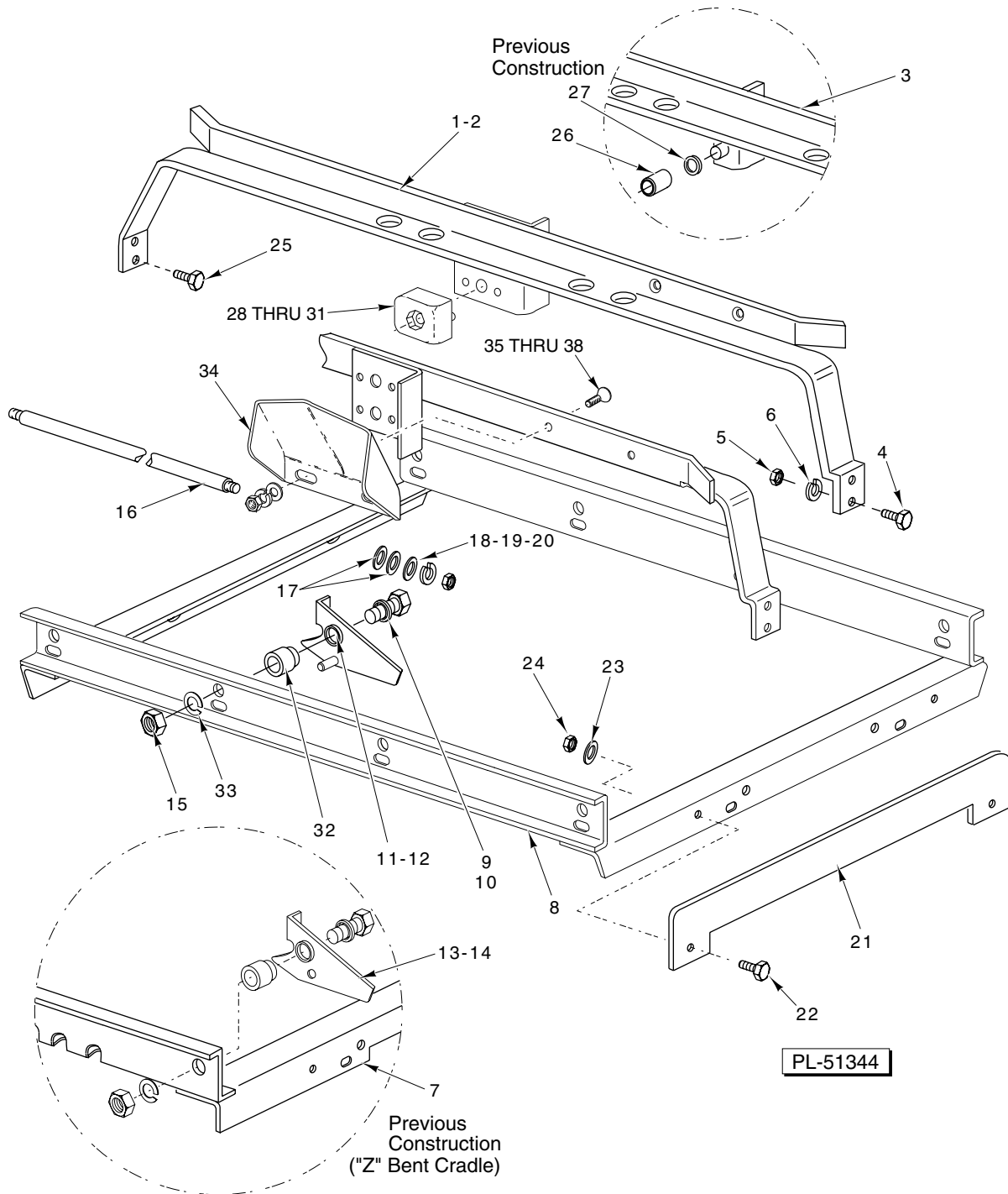
ILLUS.	PART NO.	NAME OF PART	AMT.
PL-50746			
1	SC-021-22	Mach. Screw 10-24 x $\frac{3}{8}$ Rd. Hd. (SST)	1
2	WL-006-07	Lockwasher #10 Medium	1
3	WS-023-34	Washer	1
4	00-274096	Drain Lever (R-L)	1
5	00-271070	Drain Lever (L-R)	1
6	00-119116	Axle – Drain Lever	1
7	WS-022-01	Washer	1
8	WL-006-17	Lockwasher $\frac{1}{4}$ Medium	1
9	NS-015-01	Nut $\frac{1}{4}$ -20 Hex (SST)	1
10	00-274080	Lift Rod Overflow (R-L)	1
11	00-274079	Lift Rod Overflow (L-R)	1
12	NS-015-11	Nut $\frac{5}{16}$ -18 Hex	2
13	WL-006-23	Lockwasher $\frac{5}{16}$ Medium (SST)	1
14	WS-017-01	Washer	2
15	00-270952	Retainer	1
16	WS-017-01	Washer	2
17	WL-006-23	Lockwasher $\frac{5}{16}$ Medium (SST)	1
18	NS-015-11	Nut $\frac{5}{16}$ -18 Hex	2
19	00-119099-00002	Tube – Overflow	1
20	00-067500-00120	O-Ring	1
21	00-289464	Gasket – Drain	1
22	00-270947	Sleeve – Drain Body	1
23	00-289465	Drain Body	1
24	00-328813	Bushing – Drain	AR
25	00-274132-00001	Pipe – Drain (R-L) (CRS66A/AW, CRS76A, & CRS110A)	1
26	00-274132-00002	Pipe – Drain (L-R) (CRS66A/AW, CRS76A, & CRS110A)	1
27	00-274132-00006	Pipe – Drain (CRS86A)	1
28	WL-006-28	Lockwasher $\frac{3}{8}$ Medium	6
29	SC-041-28	Cap Screw $\frac{3}{8}$ -16 x $\frac{3}{4}$ Hex Hd.	6
30	WS-006-44	Washer	6



WATER LEVEL FLOATS

WATER LEVEL FLOATS

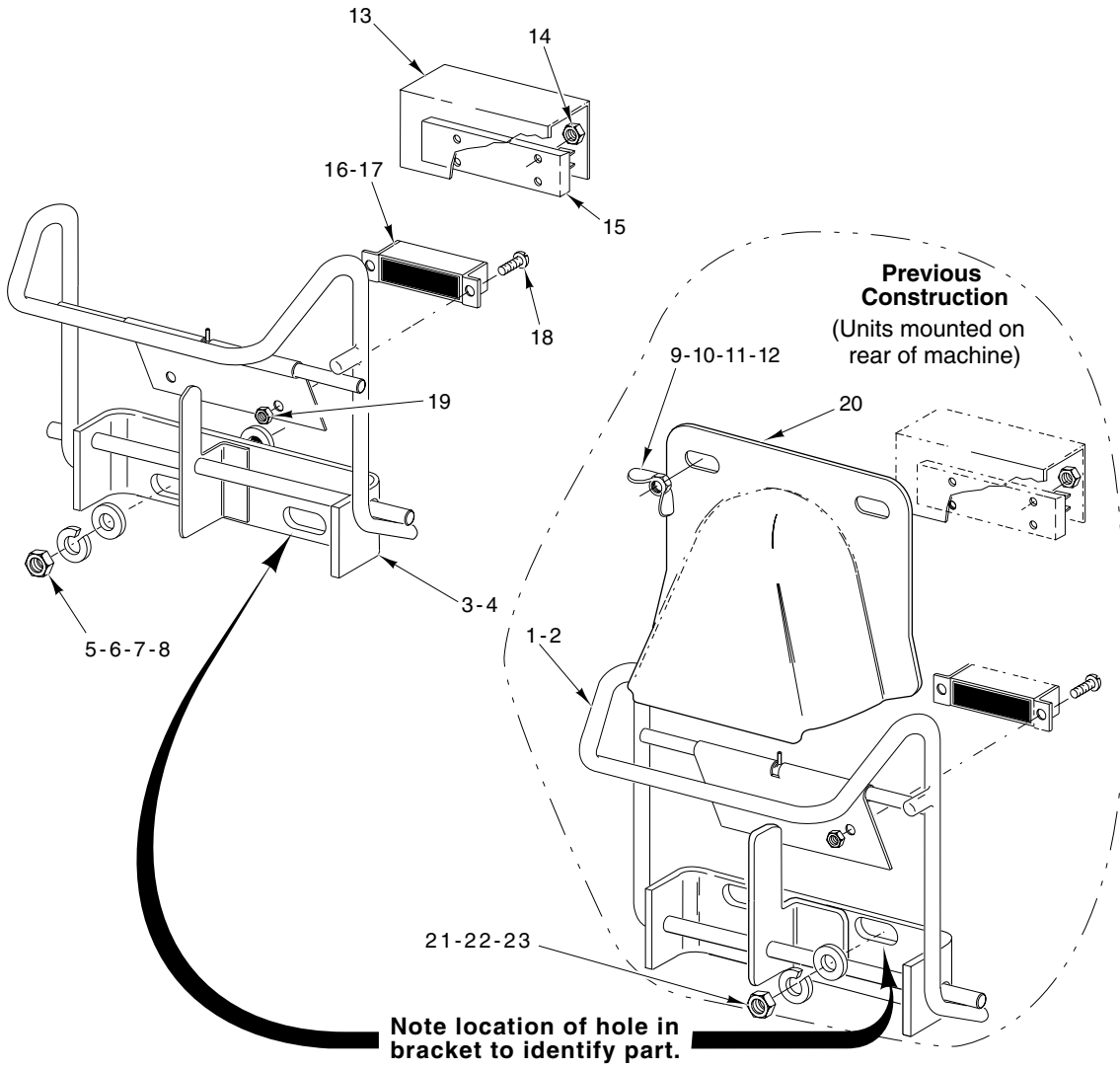
ILLUS.	PART NO.	NAME OF PART	AMT.
PL-55283			
1	00-122674	Float Assy.	2
2	00-112467	Retainer – Float	2
3	00-328495	Switch & Probe Assy. (Includes Items 1, 2, & 5) (Must Order 2 Jumper Wires, Part #328758)	2
4	00-067500-00072	O-Ring	2
5	RR-010-13	Retaining Ring	2
6	00-274224	Box – Probe (R-L)	1
7	00-274097	Box – Probe (L-R)	1
8	00-112005	Gasket (Lid)	1
9	00-289146-00001	Lid & Gasket Assy. (Incls. Item 8)	1
10	SD-012-20	Self-Tapping Screw 8-32 x 1/2 Phil. Truss Hd., Type T	6
11	WS-010-40	Washer – Thrust	2
12	WL-014-31	Lockwasher 1/2 External Shakeproof (SST)	2
13	NS-018-28	Jam Nut 1/2-20 Hex	2
14	FE-024-58	Connector – Straight (Non-Metallic) Sealtite (3/4 Male Thd. x 3/4 Flex. Cnd.)	1
15	FE-024-66	Connector – 90 Deg. (Non-Metallic) Sealtite (3/4 Male Thd. x 3/4 Flex. Cnd.)	1
16	FE-008-11	Gasket – Electrical	AR
17	FE-024-57	Connector – Straight (Non-Metallic) Sealtite (1/2 Male Thd. x 1/2 Flex. Cnd.)	2
18	FE-008-10	1/2 Gasket Assy.	AR
19	FE-024-61	Connector 1/2 x 45 Deg. (Non-Metallic) Sealtite (1/2 Male Thd. x 1/2 Flex. Cnd.)	2
20	FE-008-10	1/2 Gasket Assy.	2
21	00-065890-00085	Line – Splice	AR
22	PB-004-08	Plug – Button 7/8 (Heyco 2703)	1



TRACK AND CRADLE

TRACK AND CRADLE

ILLUS. PL-51344	PART NO.	NAME OF PART	AMT.
1	00-436870-00001	Rack Track (Rear, R-L; Front, L-R)	1
2	00-436871-00001	Rack Track (Rear, L-R; Front, R-L)	1
3	—	Rack Track (Not Available) (Order One of * Below)	2
4	SC-041-11	Cap Screw $\frac{5}{16}$ -18 x $\frac{3}{4}$ Hex Hd. (SST)	4
5	NS-015-11	Nut $\frac{5}{16}$ -18 Hex	8
6	WL-006-23	Lockwasher $\frac{5}{16}$ Medium (SST)	8
7	—	Cradle (Not Available) (Order One of * and ** Below)	AR
8	00-436931	Cradle	1
9	SC-041-31	Cap Screw $\frac{3}{8}$ -16 x $1\frac{1}{4}$ Hex Hd.	4
10	WS-018-04	Washer	4
11	00-436704-00001	Dog (Front R-L) (Rear L-R)	2
12	00-436704-00002	Dog (Front L-R) (Rear R-L)	2
13	00-436703-00001	Dog (Front R-L) (Rear L-R) (Service for "Z" Bent Cradles Only)	2
14	00-436703-00002	Dog (Front L-R) (Rear R-L) (Service for "Z" Bent Cradles Only)	2
15	NS-046-09	Stop Nut $\frac{3}{8}$ -16 Elastic	4
16	00-274559	Screw – Connecting	2
17	WS-029-74	Washer	8
18	WS-017-01	Washer	4
19	WL-006-23	Lockwasher $\frac{5}{16}$ Medium (SST)	4
20	NS-015-11	Nut $\frac{5}{16}$ -18 Hex	4
21	00-271012	Baffle – Cradle Upper	AR
22	SC-041-10	Cap Screw $\frac{5}{16}$ -18 x $\frac{5}{8}$ Hex Hd.	AR
23	WL-006-23	Lockwasher $\frac{5}{16}$ Medium (SST)	AR
24	NS-015-11	Nut $\frac{5}{16}$ -18 Hex	AR
25	SC-041-12	Cap Screw $\frac{5}{16}$ -18 x $\frac{7}{8}$ Hex Hd.	4
26	00-270977	Roller	2
27	WS-018-04	Washer	2
28	00-473232	Slider – Small	2
29	SC-041-15	Cap Screw $\frac{5}{16}$ -18 x $1\frac{1}{4}$ Hex Hd.	2
30	WL-006-23	Lockwasher $\frac{5}{16}$ Medium (SST)	2
31	NS-015-11	Nut $\frac{5}{16}$ -18 Hex	2
32	00-270983	Spacer	4
33	WL-006-28	Lockwasher $\frac{3}{8}$ Medium	4
34	00-437047	Deflector – Silverware	1
35	SC-022-39	Mach. Screw $\frac{1}{4}$ -20 x $\frac{5}{8}$ Flat Hd.	2
36	WS-003-47	Washer	2
37	WL-006-17	Lockwasher $\frac{1}{4}$ Medium	2
38	NS-015-01	Nut $\frac{1}{4}$ -20 Hex (SST)	2
*	00-436971	Rack Track Assy. (Rear R-L) (Front L-R) (Incls. Items 1 & 28 thru 31)	1
*	00-436972	Rack Track Assy. (Rear L-R) (Front R-L) (Incls. Items 2 & 28 thru 31)	1
**	00-436930-00001	Cradle & Dog Assy. (Incls. Items 8 thru 12, 15, 32, & 33)	1

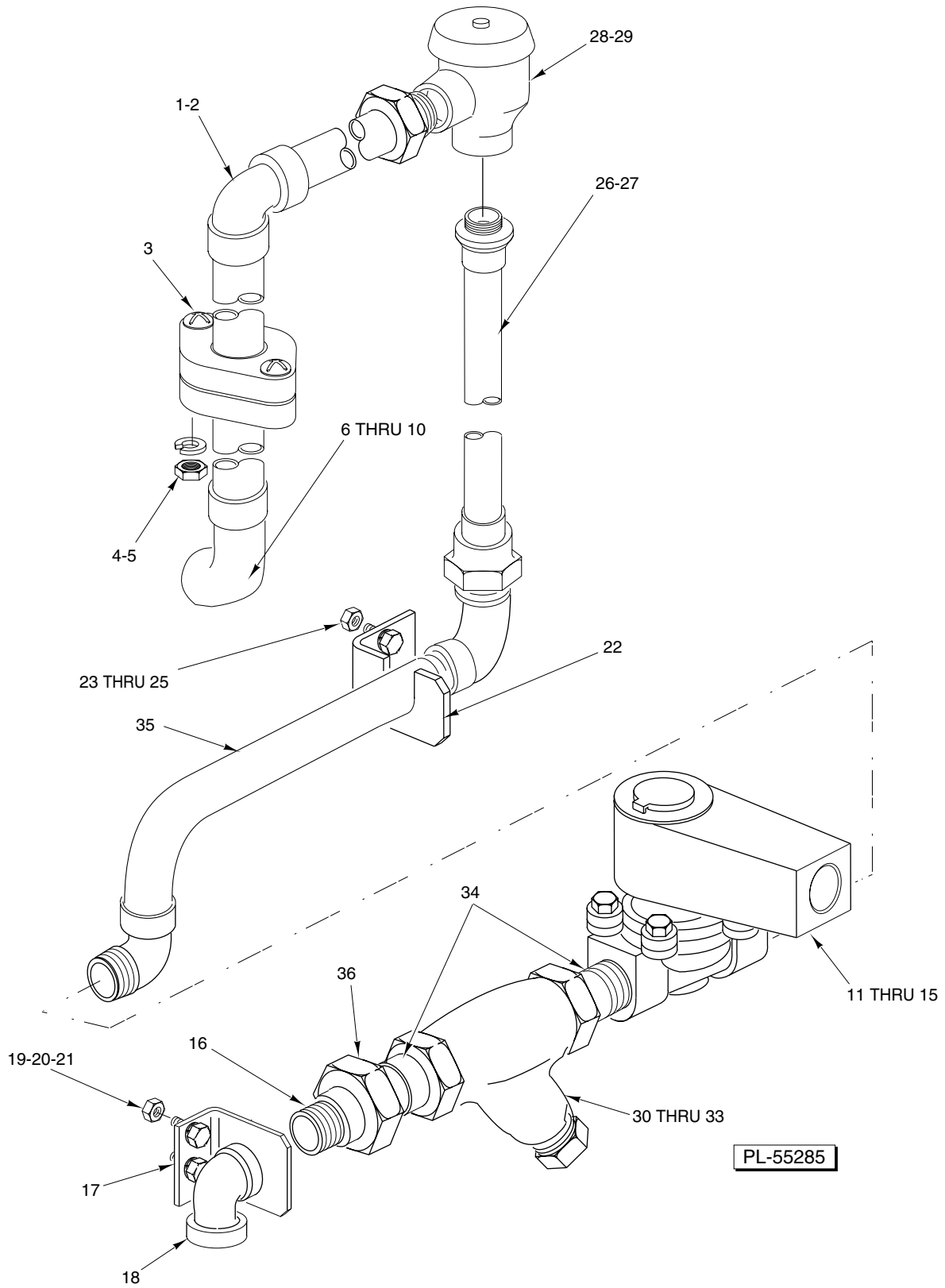


PL-55284

ACTUATOR MECHANISM

ACTUATOR MECHANISM

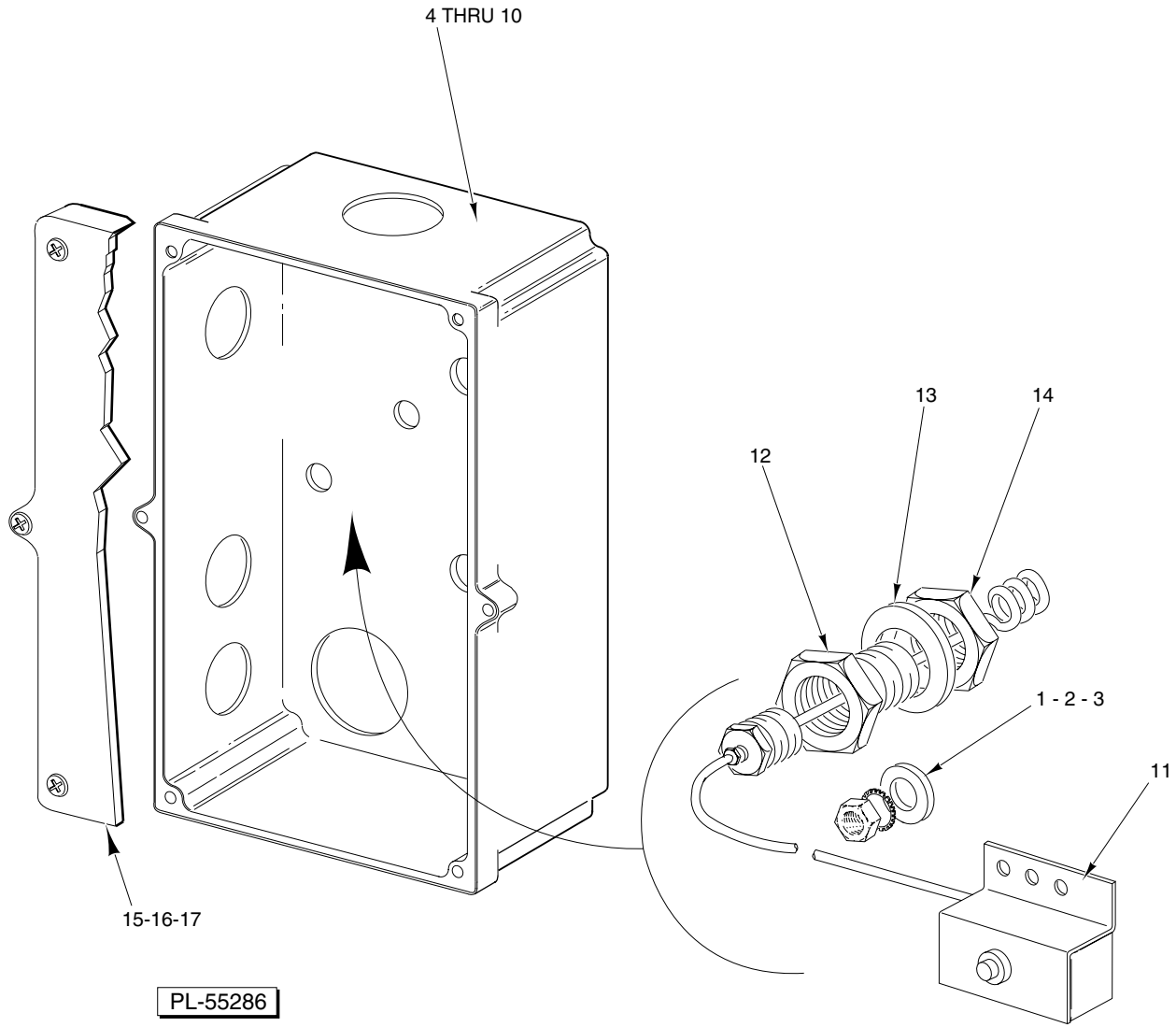
ILLUS.	PART NO.	NAME OF PART	AMT.
PL-55284			
1	00-435809	Actuator (Rear R-L)	1
2	00-435808	Actuator (Rear L-R)	1
3	00-436955	Actuator (Front R-L)	1
4	00-436027	Actuator (Front L-R)	1
5	WL-006-23	Lockwasher ⁵ / ₁₆ Medium (SST)	2
6	WS-017-08	Washer	2
7	WS-029-05	Washer	2
8	NS-015-11	Nut ⁵ / ₁₆ -18 Hex	2
9	NS-029-01	Wing Nut ¹ / ₄ -20	2
10	WS-006-17	Washer	2
11	WS-017-06	Washer	2
12	SC-053-42	Mach. Screw ¹ / ₄ -20 x ⁵ / ₈ Truss Hd. (SST)	AR
13	00-270996	Insulator – Switch	1
14	NS-031-50	Stop Nut 6-32 Hex (SST)	2
15	00-749347	Switch – Reed Encapsulated	1
16	00-290160	Magnet (Dot Toward Switch)	1
17	00-290159	Retainer – Magnet	1
18	SC-127-26	Mach. Screw 6-32 x ³ / ₈ Rd. Hd. (SST)	2
19	NS-031-50	Stop Nut 6-32 Hex (SST)	2
20	00-436835	Shroud	1
21	WL-006-23	Lockwasher ⁵ / ₁₆ Medium (SST)	2
22	WS-017-08	Washer	2
23	NS-015-11	Nut ⁵ / ₁₆ -18 Hex	2



**PREWASH TEMPERATURE
CONTROL – PIPING**

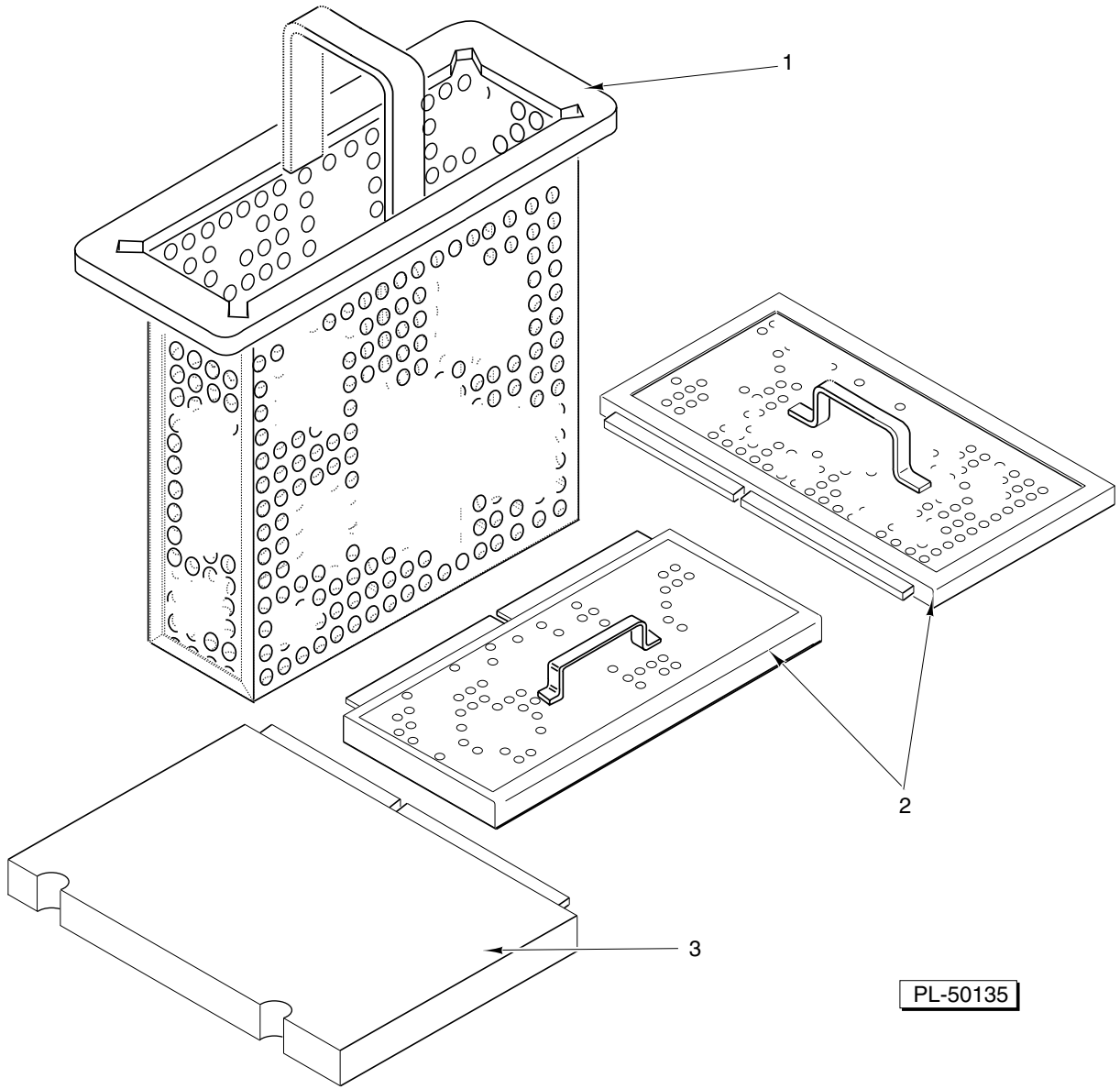
PREWASH TEMPERATURE CONTROL – PIPING

ILLUS. PL-55285	PART NO.	NAME OF PART	AMT.
1	00-274486	Piping – Upper Prewash.....	1
2	00-276407	Gasket – Rinse Pipe	1
3	SC-128-07	Mach. Screw $\frac{5}{16}$ -18 x $1\frac{1}{4}$ Rd. Hd. (SST)	2
4	WL-006-22	Lockwasher $\frac{5}{16}$ Light	2
5	NS-015-11	Nut $\frac{5}{16}$ -18 Hex	2
6	00-289971-00001	Inside Fill Pipe Assy. (L-R) (CRS86A & CRS110A)	1
7	00-289971-00002	Inside Fill Pipe Assy. (R-L) (CRS86A & CRS110A)	1
8	00-812779-00001	Inside Fill Pipe Assy. (L-R) (CRS66A/AW & CRS76A)	1
9	00-812779-00002	Inside Fill Pipe Assy. (R-L) (CRS66A/AW & CRS76A)	1
10	00-067500-00013	O-Ring	1
11	00-270329-00002	Valve – Solenoid 240 V. (CRS66A/AW W/O Pilot Circuit) (Incls. Items 12 & 15)	1
12	00-270318-00002	Coil – Solenoid Valve (240 V.)	1
13	00-270329-00001	Valve – Solenoid 120 V. (Incls. Items 14 & 15)	1
14	00-270318-00001	Coil – Solenoid Valve (120 V.)	1
15	00-270336	Service Kit – Solenoid Valve	1
16	FP-041-55	Pipe $\frac{3}{4}$ x $2\frac{1}{8}$ Brass	1
17	00-435797	Bracket – Piping	1
18	FP-015-23	Elbow – Pipe $\frac{3}{4}$ x 90 Deg. (Brass)	1
19	SC-041-10	Cap Screw $\frac{5}{16}$ -18 x $\frac{5}{8}$ Hex Hd.	2
20	WL-006-22	Lockwasher $\frac{5}{16}$ Light	2
21	NS-015-11	Nut $\frac{5}{16}$ -18 Hex	2
22	00-274481-00001	Bracket – Piping (R-L).....	1
23	SC-041-10	Cap Screw $\frac{5}{16}$ -18 x $\frac{5}{8}$ Hex Hd.	2
24	WL-006-22	Lockwasher $\frac{5}{16}$ Light	2
25	NS-015-11	Nut $\frac{5}{16}$ -18 Hex	2
26	00-292911-00003	Piping ($43\frac{3}{8}$).....	1
27	00-292911-00004	Piping ($49\frac{3}{8}$).....	1
28	00-292909-00002	Breaker – Vacuum $\frac{1}{2}$ (Incls. Item 29)	1
29	00-292910	Vacuum Breaker Float & Seal Assy.	1
30	00-186922	Strainer – Line $\frac{3}{4}$ Brass (Incls. Items 31, 32, & 33)	1
31	00-186923	Plug – Branch	1
32	00-186924	Gasket – Branch Plug	1
33	00-186925	Screen – Line Strainer.....	1
34	FP-041-50	Pipe $\frac{3}{4}$ x $1\frac{3}{8}$ TBE (Brass)	2
35	00-274484	Piping – Lower	1
36	FP-022-18	Union – Pipe $\frac{3}{4}$ Straight Female (Brass)	1



PREWASH TEMPERATURE CONTROL – ELECTRICAL

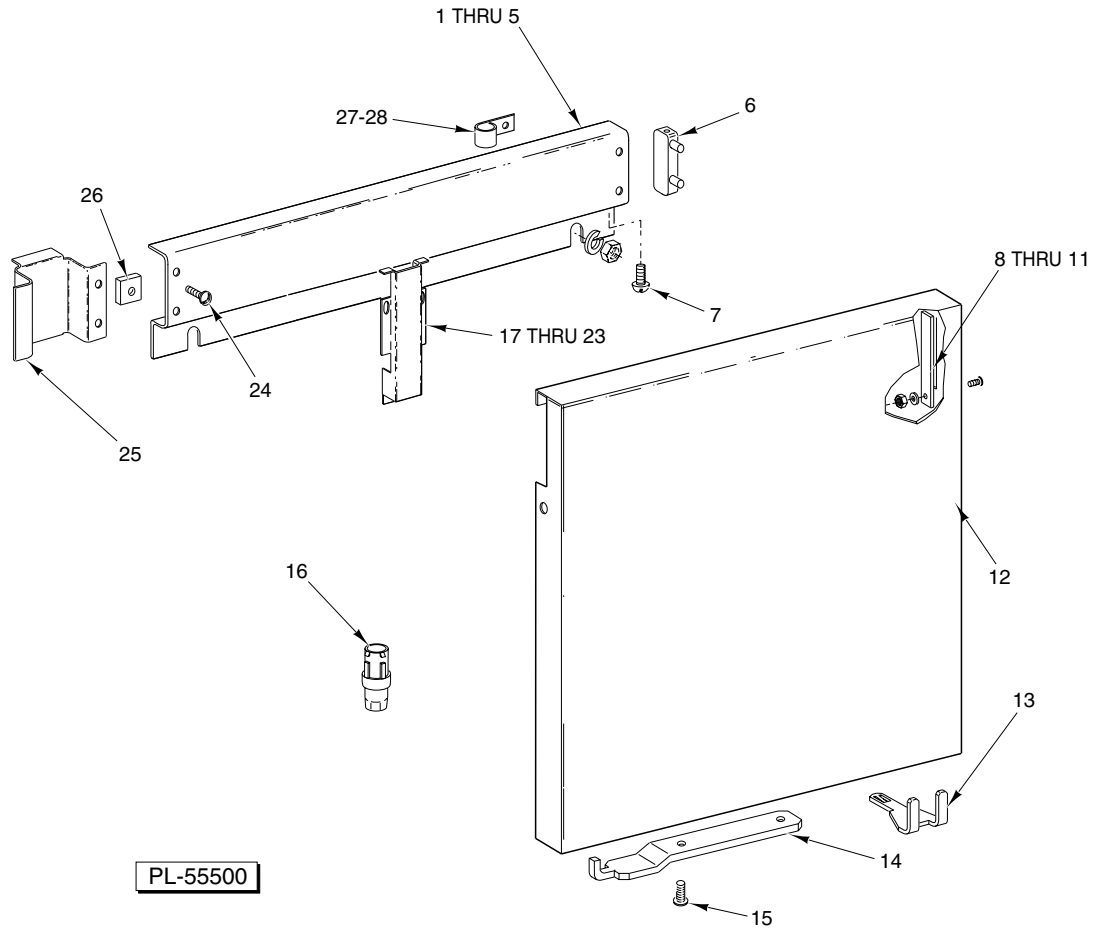
ILLUS.	PART NO.	NAME OF PART	AMT.
	PL-55286		
1	NS-011-18	Mach. Nut 10-24 Hex (SST)	2
2	WL-006-07	Lockwasher #10 Medium	2
3	WS-019-06	Washer	2
4	00-274253	Box – Float & Probe (R-L) (Previous Construction)	1
5	00-274254	Box – Float & Probe (L-R) (Previous Construction)	1
6	00-749116	Box – Float & Probe (R-L)	1
7	00-749115	Box – Float & Probe (L-R)	1
8	FE-007-03	Connector – 90 Deg. “Sealtite” (1/2 Male Thd. x 3/8 Flex. Cnd.)	1
9	FE-007-01	Connector – Straight “Sealtite” (1/2 Male Thd. x 3/8 Flex. Cnd.)	1
10	FE-008-10	1/2 Gasket Assy.	1
11	00-294681-021-1	Thermostat – Tank Heat	1
12	00-079531	Adapter – Tank	1
13	WS-012-40	Washer	1
14	FP-053-05	Pipe Locknut 1/2 NPSL (SST)	1
15	00-289146-00001	Lid & Gasket Assy. (Incls. Item 16)	1
16	00-112005	Gasket (Lid)	1
17	SD-012-20	Self-Tapping Screw 8-32 x 1/2 Phil. Truss Hd., Type T	6



BUCKET AND STRAINER PANS

ILLUS.	PART NO.	NAME OF PART	AMT.
1	00-271878	Bucket – Strainer	1
2	00-271880	Strainer	2
3	00-274143	Cover – Overflow	1

RS22A & AW SERIES PREWASH UNIT REPLACEMENT PARTS



MISCELLANEOUS

ILLUS.	PART NO.	NAME OF PART	AMT.
PL-55500			
1	00-274123-00001	Wireway – Horizontal (Front R-L) or (Rear L-R, Prior Construction)	1
2	00-274123-00002	Wireway – Horizontal (Front L-R) or (Rear R-L, Prior Construction)	1
3	WS-017-06	Washer	AR
4	NS-015-01	Nut 1/4-20 Hex (SST)	AR
5	NS-015-01	Nut 1/4-20 Hex (SST)	AR
6	00-271057	Cap – Wireway	AR
7	SD-007-38	Self-Tapping Screw 8 x 1/4 Phil. Bind Hd., Type B	AR
8	00-436888	Cover – Panel Notch	AR
9	WS-019-06	Washer	AR
10	NS-031-16	Stop Nut 10-24 Hex (SST)	AR
11	SC-053-05	Mach. Screw 10-24 x 3/8 Truss Hd., Slotted	AR
12	00-436831-00001	Panel – Front Trim	1
13	00-271061	Support	1
14	00-289771	Retainer – Panel	1
15	SC-053-02	Mach. Screw 10-24 x 1/2 Truss Hd. (SST)	2
16	00-288946-00002	Foot – Adjustable (1 1/2 to 2 3/4)	2
17	00-271055	Wireway – Vertical	AR
18	SC-021-22	Mach. Screw 10-24 x 3/8 Rd. Hd. (SST)	AR
19	WL-006-07	Lockwasher #10 Medium	AR
20	WS-017-06	Washer	AR
21	WL-006-17	Lockwasher 1/4 Medium	AR
22	NS-015-01	Nut 1/4-20 Hex (SST)	AR
23	WS-019-19	Washer	AR
24	SC-021-03	Mach. Screw 4-40 x 3/8 Rd. Hd. (SST)	2
25	00-274252	Wire – Raceway	1
26	00-072937	Speed Nut 4-40	2
27	00-294677-00003	Clamp – Wire (3/4 I.D.)	2
28	NS-047-94	Lock Nut 3/16 Stud Special	2